



THE HERITAGE

01

Garden Terrace One

This exquisite family home is designed to take advantage of it all; it assembles the main living and sleeping areas in one expansive level defined by a double-height living-dining area that opens to the private patio and garden and a winter-garden glazed extension that provides an additional living space with a stunning aesthetic.

Spread over 310 sqm and arranged on two levels, the accommodation comprises on the first, lower ground floor level, one primary suite with a walk-through closet, a secondary bedroom with bathroom, a generously sized kitchen with a casual dining table, and a powder room, and on the second level, separate staff quarters and utility room.

The interiors are crafted from the highest-quality, natural materials including cool stones, natural woods, and beautifully finished fixtures and fittings. Luxurious yet practical, they are durable, timeless, and quietly confident.



HELLENIC PROPERTIES



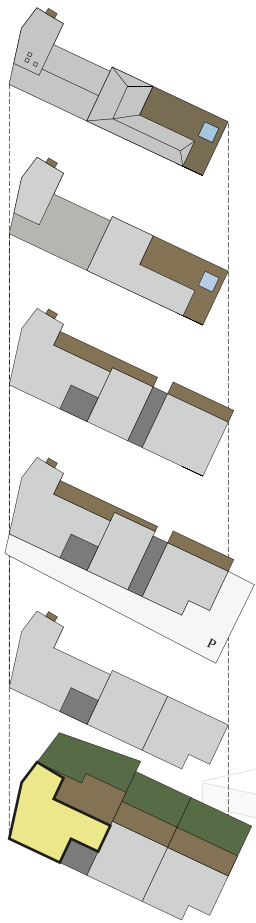
THE HERITAGE

01

Garden Terrace One

BEDROOMS / 2
TOTAL GROSS FLOOR AREA / 310 m²
GARDEN / 190 m²

1 / LIVING ROOM - DINING AREA
2 / KITCHEN
3 / PRIMARY BEDROOM
4 / SECONDARY BEDROOM
5 / BATHROOM
6 / WC



Roof

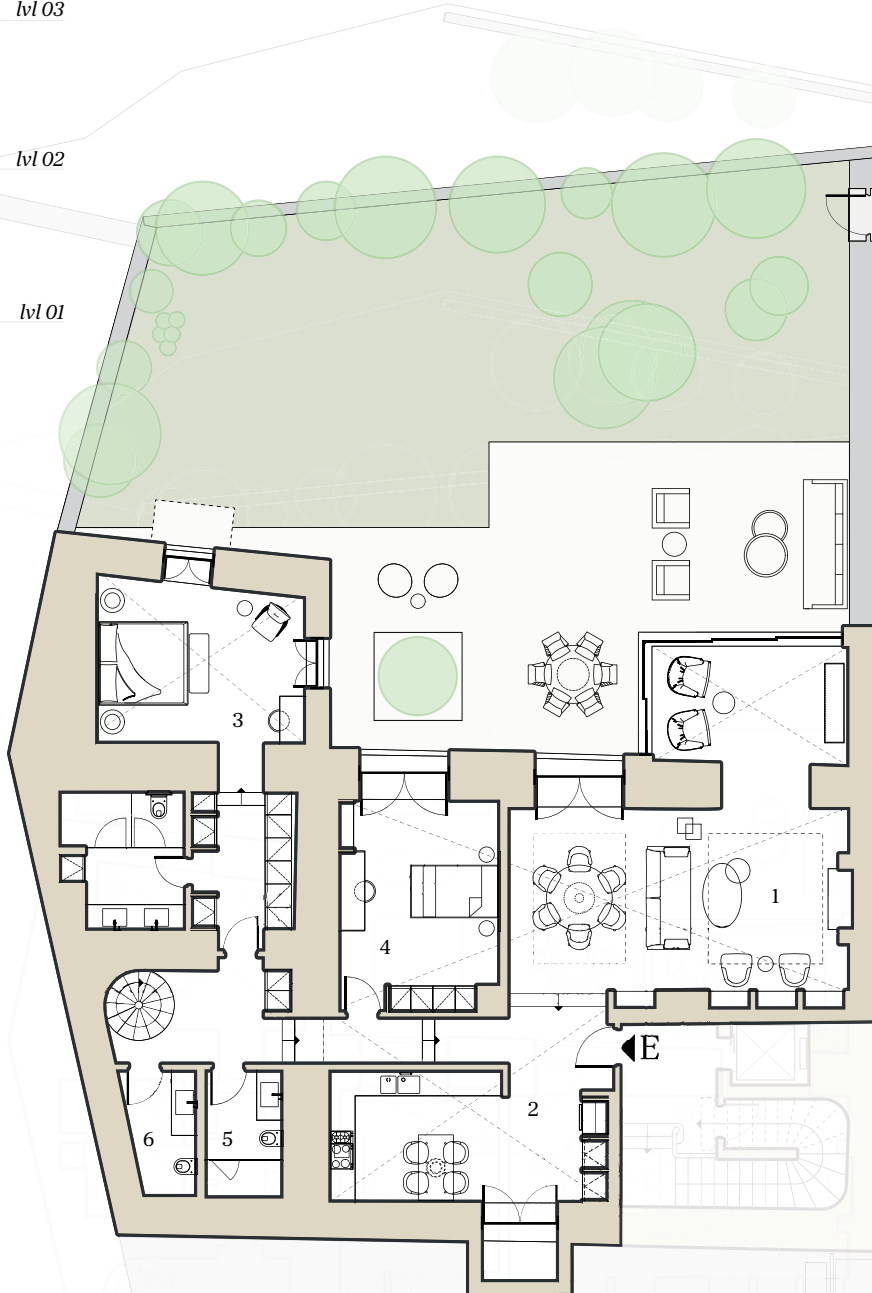
lvl 05

lvl 04

lvl 03

lvl 02

lvl 01



level 1
219 m²



HELLENIC PROPERTIES



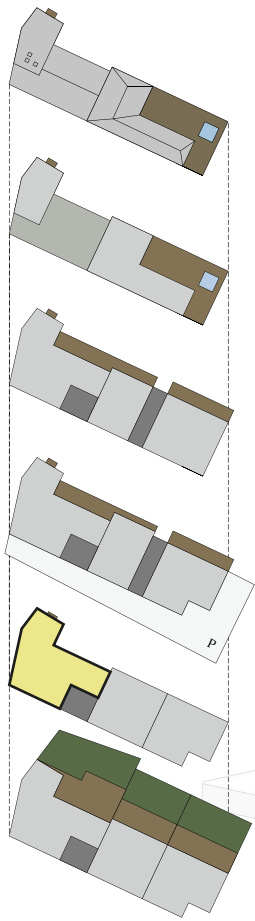
THE HERITAGE

01

Garden Terrace One

BEDROOMS / 2
TOTAL GROSS FLOOR AREA / 310 m²
GARDEN / 190 m²

1 / SHIFT ROOM
2 / LAUNDRY
3 / BATHROOM



Roof

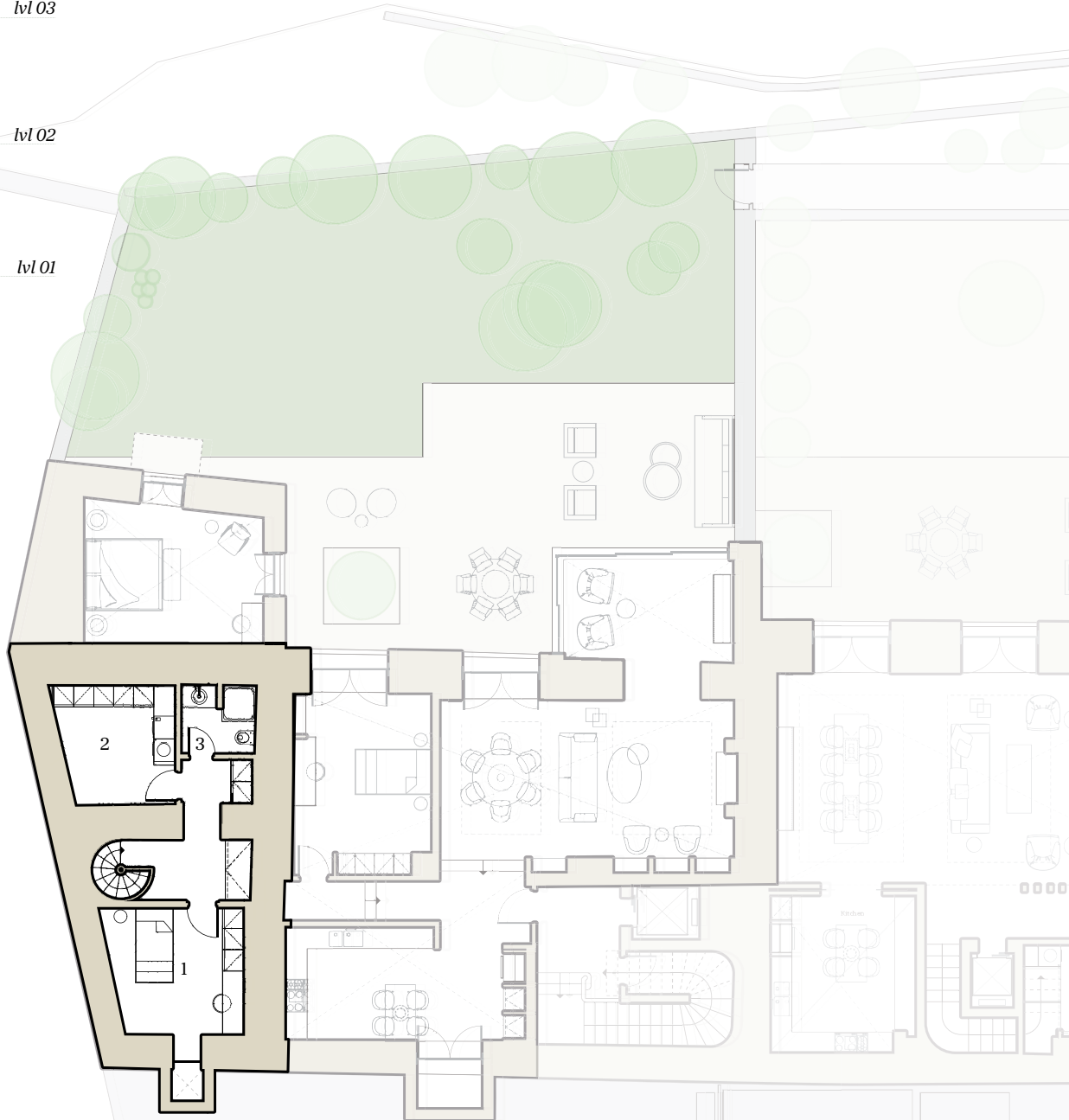
lvl 05

lvl 04

lvl 03

lvl 02

lvl 01



level 2
91 m²



HELLENIC PROPERTIES