



THE HERITAGE

02

Garden Terrace Two

This impressive residence is meticulously designed to offer a boutique living experience enriched by thoughtful functionality and effortless elegance. With an individually designed layout of 317 sqm set over three levels, this expansive family home has a harmonious balance of space, proportion, and seamless flow.

The accommodation comprises a double-height living-dining area with large windows that open to a private terrace, creating a conversation between the indoor and outdoor living spaces. On the same level, there is also a large kitchen with a casual dining table, a laundry room, a powder room, and a spiral staircase leading to the staff quarters. A separate staircase and an in-home, private elevator lead to the third level, consisting of one primary bedroom with an ensuite bathroom and two secondary bedrooms with a shared bathroom.

The interiors are suitably eye-catching, with cool stones, natural woods, beautifully finished fixtures, and fittings, setting the tone for a unique residential experience.



HELLENIC PROPERTIES



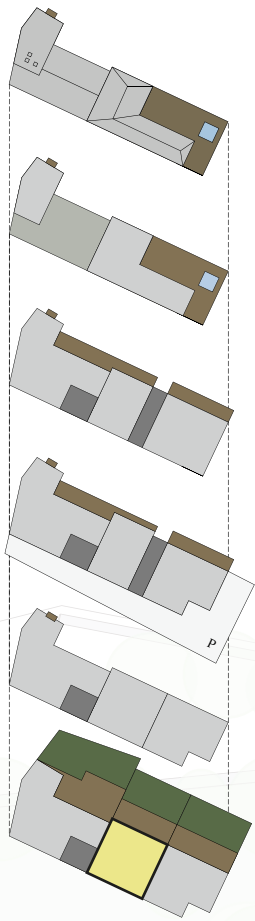
THE HERITAGE

02

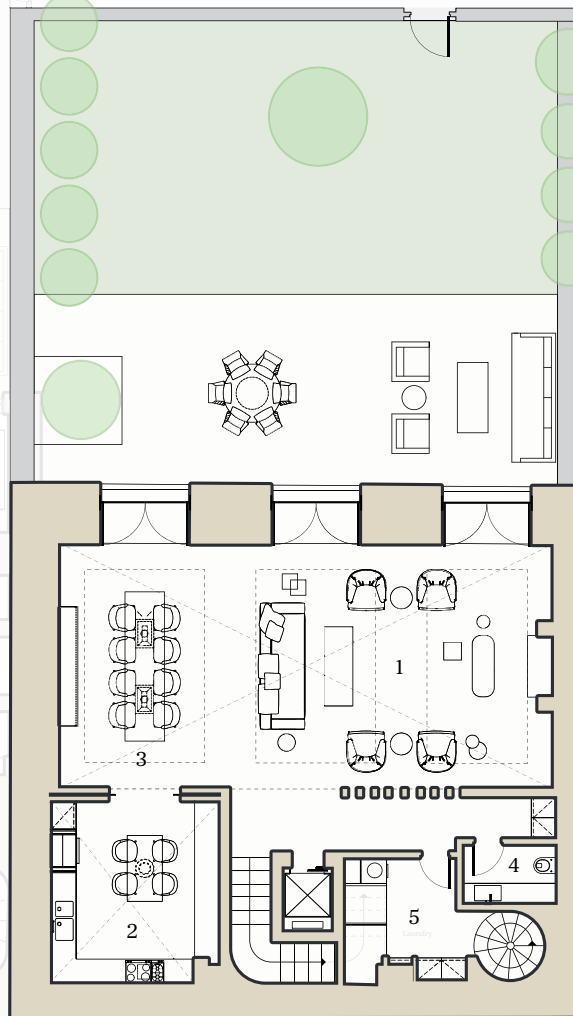
Garden Terrace Two

BEDROOMS / 3
TOTAL GROSS FLOOR AREA / 317 m²
GARDEN / 138 m²
BALCONIES / 12 m²

1 / LIVING ROOM
2 / KITCHEN
3 / DINING AREA
4 / WC
5 / LAUNDRY



Roof
lvl 05
lvl 04
lvl 03
lvl 02
lvl 01



level 1
146 m²



HELLENIC PROPERTIES



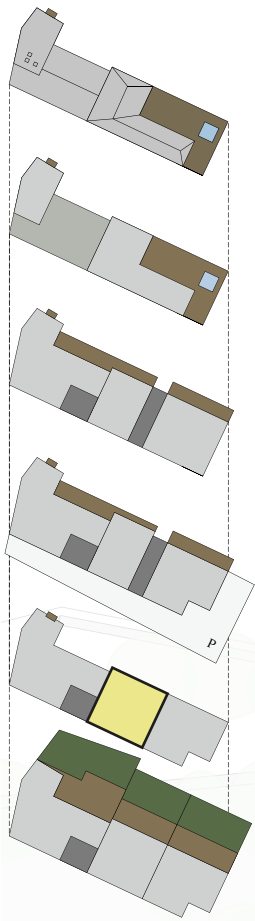
THE HERITAGE

02

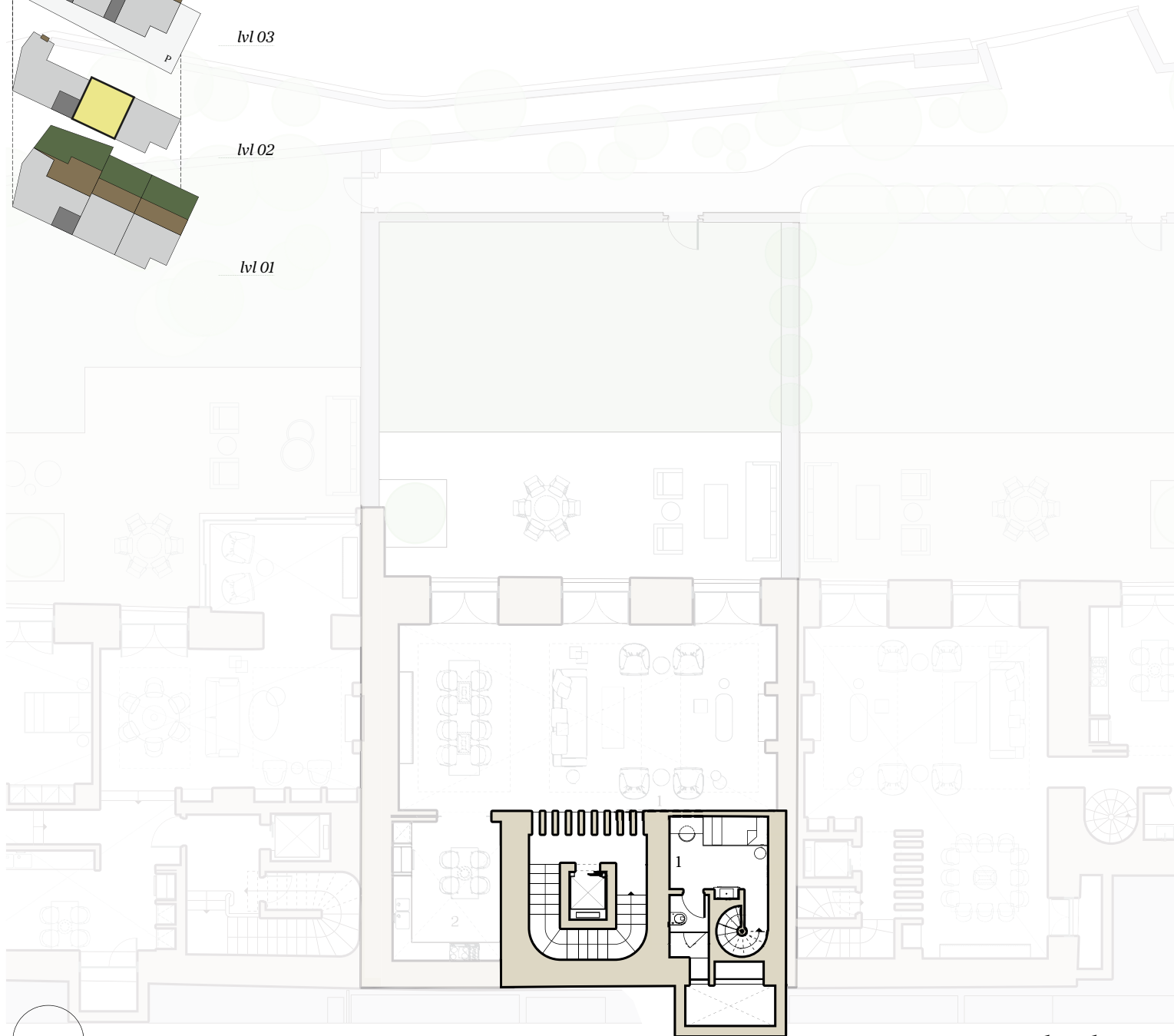
Garden Terrace Two

BEDROOMS / 3
TOTAL GROSS FLOOR AREA / 317 m²
GARDEN / 138 m²
BALCONIES / 12 m²

1 / SHIFT ROOM



Roof
lvl 05
lvl 04
lvl 03
lvl 02
lvl 01



level 2
56 m²



HELLENIC PROPERTIES



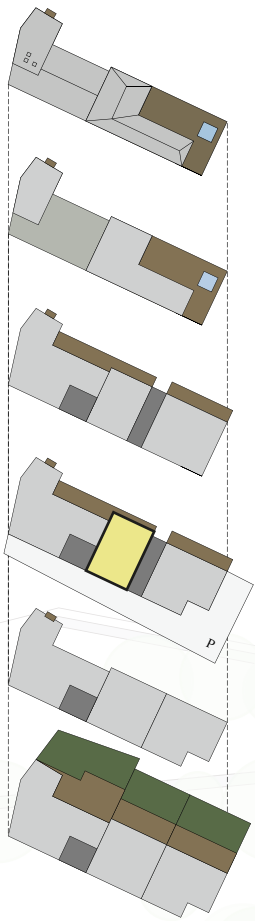
THE HERITAGE

02

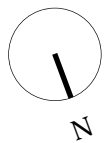
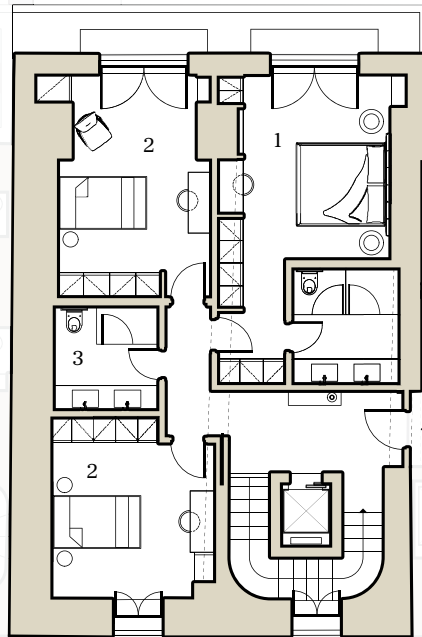
Garden Terrace Two

BEDROOMS / 3
TOTAL GROSS FLOOR AREA / 317 m²
GARDEN / 138 m²
BALCONIES / 12 m²

1 / PRIMARY BEDROOM
2 / SECONDARY BEDROOM
3 / BATHROOM



Roof
lvl 05
lvl 04
lvl 03
lvl 02
lvl 01



level 3
115 m²



HELLENIC PROPERTIES